

# AUCTION

**SATURDAY, JANUARY 10, 2026 \*\*10:00 AM\*\***

## **Chad Stegall Estate**

**11 CR 4315 Enloe, Texas 75441**

**(Enloe, TX is located between Paris, TX and Cooper, TX in Northeast TX)**

**Directions:** From Loop 286 Southwest of Paris, TX and State Hwy. 24, go South on TX Hwy. 24 for 14.5 miles to FM 198. Go West on FM 198 for 6 miles to the auction site. Follow same from 8 miles North of Cooper, TX on TX Hwy. 24 to FM 198.

**Auctioneers Note:** Due to the untimely passing of our friend and customer, Mr. Chad Stegall, Mrs. Geneva Stegall and her family have commissioned Bob Mitchell Auctioneers, LLC of Terrell, TX to offer for sale at public auction their tractors, combine, cotton strippers, JD self-propelled sprayer, equipment, trucks, and trailers, of which most have been barn kept when not in use. The loader will be furnished until Monday, January 19th. Also, a special thanks to Mark Moody for his friendship and loyalty to the family. **ONSITE and ONLINE BIDDING** powered by Equipment Facts.

## **CLEAN TRACTORS & LOADERS**

John Deere 6150 M, MFWD, Deluxe Cab & Air, Power-Quad transmission with left-hand reverser, 480/80-R42 rear tires, 16.9-R28 front tires, front fenders, 3 hydraulic remotes, with John Deere H360 Loader, Bucket and Hay Fork, showing 4,927 hours, S/N 1L06150MH0H777476



John Deere 8320 R, MFWD, Deluxe Cab & Air, IVT transmission, ILS front axle, 480/80-R50 rear duals, 520/85-R34 front duals, front fenders, 4 hydraulic remotes, quick coupler, P.T.O., front and rear weights, with Starfire 7500 Satellite Dome - JD Factory display, showing 3,502 hours, S/N R0M8NBR612702



John Deere 8420, MFWD, Deluxe Cab & Air, Powershift transmission, 480/80-R50 rear duals, 480/70-R34 front tires, ILS front axle, front fenders, 4 hydraulic remotes, 3pt. P.T.O., quick coupler, front and rear weights, showing 8,519 hours, S/N R0AH85F009969, with Starfire 6000 Satellite Green Star 3 - 2630 display, S/N PCGU2UD469826



John Deere 4760, Deluxe Cab & Air, Quad-Range transmission, 3 hydraulic remotes, 3pt., P.T.O., quick coupler, 20.8-R38 rear duals, 11L-16.1 front tires, front and rear weights, showing 12,304 hours, S/N RW4760H001782, (approx. 500 hrs. on new rebuilt engine)

John Deere 9400, 4wd, Deluxe Cab & Air, standard shift transmission, 3 hydraulic remotes, 620/70R-42 (8), showing 8,717 hours, S/N RW9400H030682 with Starfire ITC Dome - 4640 display, S/N PCGU6UD116585

IHC 1086, Cab & Air, dual hydraulic remotes, 3pt. 540-1000 P.T.O., 18.4-R38 rear tires, 11.00-16 front tires

## **BULLDOZER**

Caterpillar D6R, Cab & Air, high-track dozer, 10'6" straight blade with tilt, Powershift transmission, approx. 80% under carriage, engine overhaul 950 hours ago, showing 21,123 hours, S/N CAT00D6RC5LN03171



# IMPLEMENTS

Land Pride RBT6012, 3pt all hydraulic blade with 12' blade, S/N 730427

John Deere HX 20' hydraulic folding shredder, 1000 P.T.O., front and rear chain guards, stalk mulching kit, S/N 1P0HX20FKH8028504

Great Plains 3S-4000 HD, 40' hydraulic folding grain drill, double disc openers, 7.5" spacings, 3x13 press wheels, S/N 3S-4000HD-6375

Great Plains 3S-3000, 30' hydraulic folding grain drill, double disc openers, 7.5" spacings, 2x13 press wheels, precision monitor, S/N S1757

John Deere 1770 NT Max Emerge XP, 16-row, 30" planter with 600-gallon liquid fertilizer tank, John Blue ground driven pump, row markers and Computer-Trak 35 monitor, S/N A01770Y710174

John Deere 1760, Max Emerge XP, 12-row, folding 30" planter with (2) 200-gallon liquid fertilizer tanks, Row-Flow precision planting, hydraulic down pressure, row cleaners, row markers, S/N NA

Landoll 6230, 33' hydraulic folding disk, walking tandems on center and wings, dual wing gauge wheels, new 24" blades front and rear, S/N 62E1203076

Landoll 7431-VT Plus, 29' vertical till, hydraulic folding disk, walking tandems on center and wings, wing gauge wheels, spiral rolling harrow attachment, front blades 18.5", rear blades 19", S/N H1304975

John Deere 2210, 46' hydraulic double-folding field cultivator with walking tandems on center and both wings, hydraulic depth wheels, wing and gauge wheels, 4-bar harrow attachment, S/N AD0755462

Case IH 5800, 37-shank chisel plow, hydraulic fold, walking tandems center and wings, gauge wheels center and wings, S/N 0622283

(Selling separately: 2 Case IH wings, 1 with 6 shanks and 3-bar harrow and 1 with only 3-bar harrow)

Case IH 340, 33' hydraulic folding disk, walking tandems center section, dual gauge wheels on wings, front blades 18.25", rear blades 20.5", S/N YDD066745

John Deere 980, 42' hydraulic folding field cultivator, walking tandems center and wings, wing gauge wheels, 3-bar John Deere harrow attachment, S/N N00980X010763

Krause pull-type, 32' hydraulic folding field cultivator

Great Plains 6636 HD, 16-bar, 36' pull-type harrow, S/NC1885B

IHC 496, 32' hydraulic folding disk

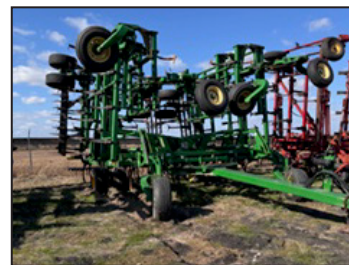
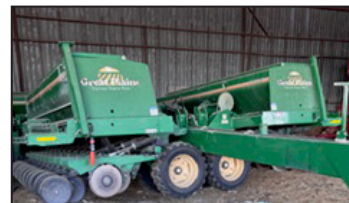
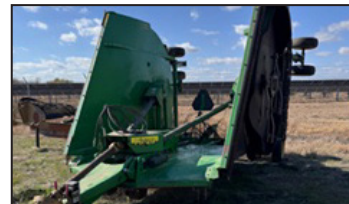
IHC 490, 24' hydraulic folding disk

Wilrich pull-type, 27' hydraulic folding field cultivator

(2) IHC 55, pull-type hydraulic folding chisel plows, (1) 33-shank and (1) 25-shank

IHC 183, 3pt., 12-row, 30" flat fold cultivator

John Deere 3pt., 12-row, 30" vertical folding cultivator





## COTTON EQUIPMENT

John Deere 7460 stripper with John Deere 748, 8-row, 30" header with 6 units mounted, 2 units not mounted and sells with machine to complete 8-row head, showing 1,938 machine hours, 1,577 fan hours, machine S/N N07460X022006, Head S/N N00748X002016

John Deere 7450 stripper with 8-row, 30" header with 6 units mounted, 2 units not mounted and sells with machine to complete 8-row head, showing 3,577 machine hours, 2,903 fan hours, machine S/N N07450X002117

John Deere 7450 stripper with 6-row, 30" header sells with only 4 units mounted, showing 5,023 machine hours, 3,856 fan hours, S/N 7450X000180

KBH cotton module builder, S/N CH03656

Big 12, 180 D cotton module builder, S/N 2336, auto-pack

Harrell Super Packer cotton module builder, S/N NA

KBH Mule Boy boll buggy, S/N NB03296

Hanby 3pt., 24' roller/packer



## HAY EQUIPMENT

John Deere 567 round baler, mega-wide, S/N E00567X156033

John Deere 946 MoCo center-pull mower conditioner with flail conditioner, S/N E00946TLGG420725

John Deere 705 hydraulic twin rake, S/N NA

Kuhn SR112 G11 speed rake, 12-wheel, hydraulic fold, S/N NA

Krone KW 5.52/4X7T, 4-basket hay tedder, Like New, S/N WMKKW502001100463

Hay King gooseneck, 5-bale, tandem axle hay trailer, S/N 1431

Red Rhino gooseneck, 42', tandem axle, single dump hay trailer, S/N 22304P

IHC 1250 grinder mixer



## COMBINE and GRAIN HANDLING EQUIPMENT

John Deere 9870 STS Bullet Rotor, 4wd Combine with 520/85-R42 duals, straw chopper, Green Star ready, grain tank extension, showing 3,586 engine hours, 2,486 separator hours, S/N 730837

John Deere 936 draper, 36' with transport kit, S/N H00936D716290

John Deere 630 F, 30' hydra-flex header, S/N H00630F712516

Industrias America 435, 35' tandem axle header trailer, S/N 43520201444

John Deere 843 corn head, S/N H00843X631119

John Deere 853A row crop head, S/N H0853AX630405



## COMBINE and GRAIN HANDLING EQUIPMENT cont.

(4) Pull-type, 4-wheel, 225 gravity flow wagons, (2) with auger

Westfield MK-100-71, P.T.O. driven, portable grain auger with belly pan swing away auger, S/N 158767

Kills Bros. 1800, P.T.O. driven, 1,000-bushel grain cart, New 30.5-32 diamond tread tires, roll-over tarp, S/N 13280117

J&M 500 bushel, P.T.O. driven grain cart, with roll-over tarps

## SPRAYER and FERTILIZER EQUIPMENT

John Deere R4023, self-propelled sprayer with 600-gallon tank, 90' hydraulic folding booms, 380/80-R38 tires, Starfire 3000 dome satellite, showing 2,597 hours, S/N 1N04023RLJ019225

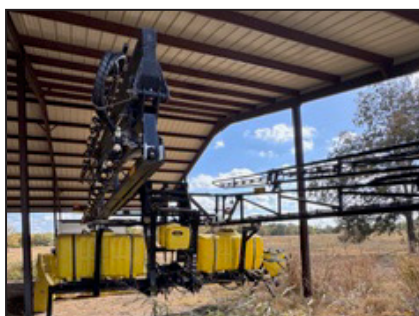
(2) Mobility 800 by Dalton, hydraulic driven bulk spreaders (row crop), dual spreader wheels, roll-over tarps, scales, 380/90-R46 tires, 60'-90' spread, both Like New

Pull-type 1,200-gallon, S.S. nurse tank with mixing tank, 2" pump, shuttle rack, tandem axle

Shop-built, pull-type, 1,000-gallon, poly nurse tank trailer, 2" pump, tandem axle

Unverferth 3pt., top air, 600-gallon, 90', hydraulic folding spray boom, Green Star controller, on stand, S/N B32310129

Adams pull-type, 12-row narrow fertilizer applicator with piston pump, ground driven



## TRUCKS, TRAILERS, and PICKUPS

1998 Freightliner Semi Truck, Conventional Day Cab, 12.7 liter Detroit engine, 10-speed Eaton transmission, set-back front axle, tandem axle, showing 642,005 miles, VIN: 1FUFDZYb5XL953452

1996 Freightliner Conventional with Detroit Series 60 engine, 9-speed transmission, 48" sleeper, set-back front axle, showing 678,000 miles, VIN: 1FUFDZYB0798256

2013 Armorlite SGH-425T, 42' steel, hopper bottom grain trailer with lock-down electric roll-over tarp, tandem axle, spring-ride, 11R-24.5 tires, S/N S6EA51M20EA000182

1997 Sparta GH 42-2, 42' steel hopper bottom grain trailer with lock-down electric roll-over tarp, 11R-22.5 tires, tandem axle, spring-ride, S/N 1S9GH4223VM451346





## TRUCKS, TRAILERS, and PICKUPS cont.

1978 Citation 5,600-gallon, S.S. tanker trailer, tandem axle, spring-ride, 11R-22.5 tires, B&S 9HP engine, with 2" pump, S/N 7021GVWR59980

2004 Chevrolet 2500 HD, 4x4 C&M flatbed Service Truck with Duramax diesel engine, automatic transmission, with air compressor and toolboxes, showing 187,643 miles, VIN: 1GCHK241E102632

2009 Ford F250 Super Duty 4x4 Pickup, with 5.4 liter engine, automatic transmission, showing 195,312 miles, VIN: 1FTNF21599EA47635

1973 Loadcraft drop-deck trailer with 12' upper deck, 37' deck (overall 49')

## LIVESTOCK SCALES and MISC. ITEMS

Rice Lake portable livestock weighing system, computer scales, tandem axle, air-ride, Like New

Kubota Z421 zero-turn mower with Kawasaki FS 730-V engine, 54" deck

(2) portable fuel tank trailers powered by Honda engine; (1) 500-gallon (1) 600-gallon

2019 Kawasaki Mule 4x4, side by side with windshield and cab enclosure, showing 1,225 hours, new engine 2 years ago, transmission 1 year ago.

New and Used parts, attachments, etc.



**AUCTION CONDUCTED BY:**  
**Bob Mitchell Auctioneers, Inc.**  
**P.O. Box 873, Terrell, TX 75160**  
**Kyle Mitchell**  
**Lic #8472**

**Cell: 214-908-0894**

**[www.bobmittellauctioneersllc.com](http://www.bobmittellauctioneersllc.com)**



P.O. Box 873  
Terrell, TX 75160

Presorted First Class  
US Postage  
**PAID**  
Dallas TX  
Permit No 3193

**FIRST CLASS**  
PRINTED IN USA

# AUCTION

## SATURDAY, JANUARY 10, 2026

RETURN SERVICE REQUESTED

**\*\*10:00 AM\*\***

**Chad Stegall Estate**  
**11 CR 4315 Enloe, Texas 75441**



### **SALES TAX EXEMPTIONS**

Buyers claiming Sales Tax exemption for agricultural purposes or resale are required to have either a current Texas Ag/Timber Number, or a Texas Resale Number at the time of purchase or sales tax will be applied.

To apply for an Ag/Timber Number please go to the following website:  
<https://comptroller.texas.gov/taxes/ag-timber>

### **TERMS and CONDITIONS**

1. All items will be offered "as is" without warranty or guarantee, expressed or implied, with all faults and defects.
2. Everything must be settled for date of auction with cash or check with bank letter. No Drafts.
3. The buyer assumes all responsibility of every item when the item is sold to him or her.
4. Bob Mitchell Auctioneers, Inc. is not responsible for any liability resulting from accidents, fire or theft.
5. If there is an item in which more than one buyer claims the last bid, the auctioneer has the right to open the bidding up between those buyers only.
6. Most items in this auction will be sold "without reserve", however the owners have the right to bid last or no sell their items.
7. This auction is held under Texas Department of Licensing and Regulation.
8. Tax will be charged unless current Texas Ag/Timber number or Texas Resale-number is presented.
9. All announcements made at the auction supersede all printed material.

**ONLINE BIDDING Powered by**  
**Equipment Facts will be available.**  
**ONLINE BIDDERS MUST REGISTER**  
**through [www.bmaiauction.com](http://www.bmaiauction.com)**  
**PRIOR TO AUCTION DATE. When**  
**registering, please review all Terms**  
**and Conditions, and all associated**  
**fees for bidding online.**

**Equipmentfacts™**

Powered by [TractorHouse.com](http://TractorHouse.com), [MachineryTrader.com](http://MachineryTrader.com), [TruckPaper.com](http://TruckPaper.com) & [MarketBook.com](http://MarketBook.com)